

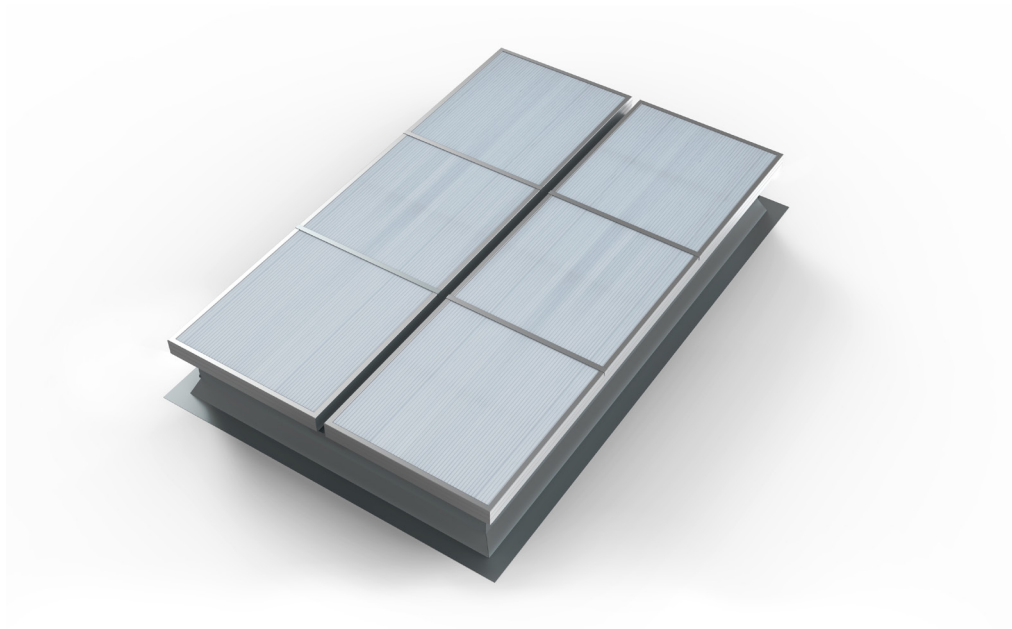


PRODUCT FEATURES

NATUS is a double flap smoke vent suitable for the removal of large quantities of warm air and / or smoke from a building within a short period of time, daily ventilation and natural lighting. Suitable for utilization on various curbs and domes.

The vents are manufactured according to ISO 9001 quality control standards and comply with the European requirements for NSHE according to EN 12101-2.

Reliability tests with 10,000 opening and closing cycles have proven its robust and functional design. The vents are formed from high quality corrosion resistant aluminium and steel to ensure low maintenance requirements and watertightness. Available on large dimensions, up to 2300 x 3000 mm (width x length).





natus

TYPICAL APPLICATIONS

May be installed either onto roofs or into daylighting systems. Particularly suitable for warehouses, logistics centers, production environments, and industries.

- Flat roofs
- Skylights
- Sandwich panel roofs

MATERIALS

Aluminum; AlMg3 tempered, seawater resistant and corrosion resistant, and extruded aluminum profiles for the frames. Aluminum is supplied untreated, as standard. Free of silicones. Conical upstands in galvanized steel integrated in the vent.

DIMENSIONS

Roof opening width: 1600 - 2300 mm.
Roof opening length: 1600 - 3000 mm.

OPENING ANGLE

90°

CONTROLS NATURAL VENTILATION

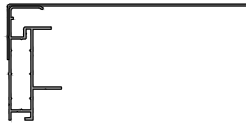
P2: double pipe compressed air operatio

CONTROLS FIRE VENTILATION

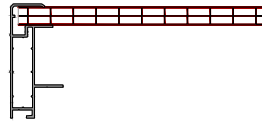
P2: double pipe compressed air operation.

FLAPS

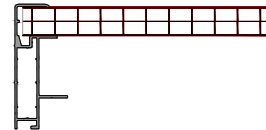
- AL** Single aluminium.
- PC16** PC16 Polycarbonate 16mm, clear or opal.
- PC25** Polycarbonate 25mm, clear or opal.



AL



PC16



PC25

FLANGES

- S3** Flange for roofs, 45° bended.
- S4** Flange for roofs and facades.
- S5** Flange for upstand, 90° bended downwards.



S3



S4



S5

WEIGHT

Depends on dimensions and type of infill.

OPTIONS

- Powder-coated design (any RAL colour)
- Anti-fall grid 1200 J.
- Thermal insulation of the upstands from 20 to 50mm.
- Upstands with anti-oxidant and waterproof welding.

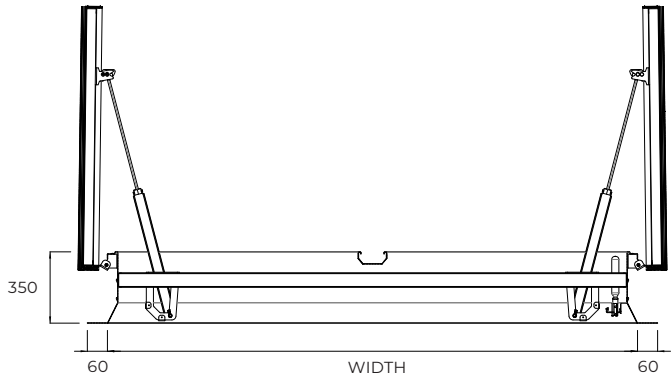
REGULATIONS

The system has been tested and is certified in accordance with EN 12101-2.

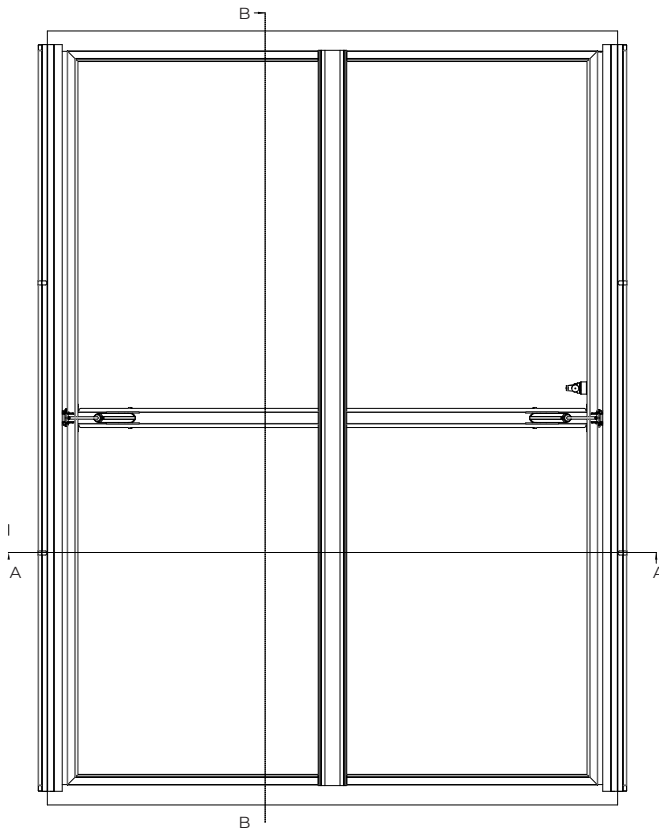
- Reliability – Re 1000
- Ventilation – Yes, 10.000 cycles (total opening)
- Snow Load – SL 1200
- Low Temperature – T(-15°C)
- Wind Load – WL 1500
- Fire Resistance – B300

ROOF OPENING DIMENSIONS (Aerodynamic Area [m²])

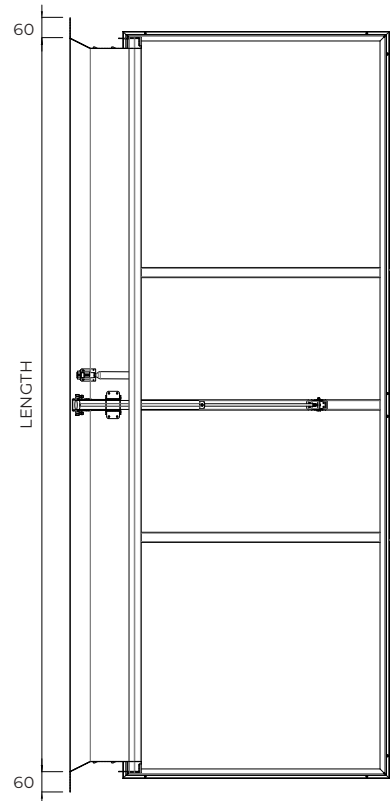
| WIDTH (mm) | LENGHT (mm) | | | | | | | |
|------------|-------------|------|------|------|------|------|------|------|
| | 1600 | 1800 | 2000 | 2200 | 2400 | 2600 | 2800 | 3000 |
| 1600 | 1,64 | 1,84 | 2,05 | 2,25 | 2,50 | 2,70 | 2,91 | 3,12 |
| 1800 | 1,87 | 2,11 | 2,34 | 2,57 | 2,81 | 3,04 | 3,33 | 3,56 |
| 2000 | 2,08 | 2,34 | 2,60 | 2,86 | 3,17 | 3,43 | 3,70 | 3,96 |
| 2200 | 2,32 | 2,61 | 2,90 | 3,19 | 3,48 | 3,78 | 4,13 | 4,42 |
| 2300 | 2,43 | 2,73 | 3,04 | 3,34 | 3,64 | 4,01 | 4,31 | 4,62 |



SECTION A-A



NATUS CONICAL UPSTAND
OPEN



SECTION B-B